

♩ = 68

Viola

Viola

Viola

Viola

This musical score block contains the first four measures of a piece for four violas. The tempo is marked as ♩ = 68. The key signature has two sharps (F# and C#), and the time signature is 9/8. The first measure begins with a treble clef and a key signature change to two sharps. The notation includes various note values (quarter, eighth, and sixteenth notes), rests, and slurs. The second measure contains a 'p' dynamic marking. The third measure has a '2' marking above the staff. The fourth measure continues the melodic and harmonic development.

5

Vla.

Vla.

Vla.

Vla.

This musical score block contains measures 5 through 8 of the piece for four violas. The notation continues with various note values, rests, and slurs. The fifth measure has a '5' marking above the staff. The eighth measure ends with a '2' marking above the staff. The overall texture remains consistent with the previous measures, featuring melodic lines and harmonic support across the four staves.

9

Vla.

Vla.

Vla.

Vla.

This block contains the first system of a musical score for four violas. The system consists of four staves, each labeled 'Vla.' on the left. The music is in 12/8 time, indicated by the 12 over 8 time signature. Measure 9 starts with a treble clef and a key signature of one flat (B-flat). The first staff (top) features a melodic line with eighth and sixteenth notes, including slurs and ties. The second staff has a similar melodic line with some rests. The third staff plays a more active role with eighth notes and slurs. The fourth staff (bottom) provides a harmonic foundation with sustained chords and some movement. Measures 10 through 13 continue these patterns, with the first staff showing some sixteenth-note runs and the fourth staff maintaining a steady accompaniment.

14

$\text{♩} = 78$

Vla.

Vla.

Vla.

Vla.

This block contains the second system of the musical score for four violas, starting at measure 14. A tempo marking of a quarter note equals 78 (♩ = 78) is placed above the first staff. The system continues with four staves, each labeled 'Vla.'. The musical patterns from the previous system are maintained and developed. The first staff continues its melodic exploration with slurs and ties. The second and third staves show more intricate rhythmic patterns with slurs. The fourth staff continues its accompaniment role with sustained notes and some movement. Measures 15 through 17 complete this system, showing a continuation of the established musical themes and textures.

18

Vla.

Vla.

Vla.

Vla.

This musical system contains measures 18 through 21 for four violas. The key signature is two sharps (F# and C#), and the time signature is 9/8. Measure 18 features a complex rhythmic pattern in the first viola with eighth and sixteenth notes, and a '2' below the staff. The second and third violas have simpler patterns, also with a '2' below the staff. The fourth viola plays a sustained low note with a long slur. Measures 19 and 20 continue these patterns with various rests and note values. Measure 21 shows a change in the first viola's pattern, including a triplet of eighth notes, while the other violas maintain their respective parts.

22

Vla.

Vla.

Vla.

Vla.

$\text{♩} = 60$

This musical system contains measures 22 through 25 for four violas. The key signature remains two sharps (F# and C#), and the time signature is 9/8. Measure 22 continues the patterns from the previous system. Measure 23 introduces a tempo marking of a quarter note equals 60 (♩ = 60) above the first staff. Measures 24 and 25 show the first viola playing a series of beamed eighth notes, while the other violas play sustained notes or simple rhythmic patterns. The fourth viola has a long slur across measures 24 and 25.

27 ♩ = 82

Four staves of music, each labeled "Vla." on the left. The music is in 12/8 time, indicated by the 12 over 8 time signature. The first staff has a key signature of one flat (B-flat). The music consists of two measures. The first measure contains a half note G4, a quarter note F#4, and a quarter note E4. The second measure contains a half note G4, a quarter note F#4, and a quarter note E4. The second staff has a key signature of one flat (B-flat). The music consists of two measures. The first measure contains a half note G4, a quarter note F#4, and a quarter note E4. The second measure contains a half note G4, a quarter note F#4, and a quarter note E4. The third staff has a key signature of one flat (B-flat). The music consists of two measures. The first measure contains a half note G4, a quarter note F#4, and a quarter note E4. The second measure contains a half note G4, a quarter note F#4, and a quarter note E4. The fourth staff has a key signature of one flat (B-flat). The music consists of two measures. The first measure contains a half note G4, a quarter note F#4, and a quarter note E4. The second measure contains a half note G4, a quarter note F#4, and a quarter note E4.

Four staves of music, each labeled "Vla." on the left. The music is in 12/8 time, indicated by the 12 over 8 time signature. The first staff has a key signature of one flat (B-flat). The music consists of two measures. The first measure contains a half note G4, a quarter note F#4, and a quarter note E4. The second measure contains a half note G4, a quarter note F#4, and a quarter note E4. The second staff has a key signature of one flat (B-flat). The music consists of two measures. The first measure contains a half note G4, a quarter note F#4, and a quarter note E4. The second measure contains a half note G4, a quarter note F#4, and a quarter note E4. The third staff has a key signature of one flat (B-flat). The music consists of two measures. The first measure contains a half note G4, a quarter note F#4, and a quarter note E4. The second measure contains a half note G4, a quarter note F#4, and a quarter note E4. The fourth staff has a key signature of one flat (B-flat). The music consists of two measures. The first measure contains a half note G4, a quarter note F#4, and a quarter note E4. The second measure contains a half note G4, a quarter note F#4, and a quarter note E4.

31

Vla.

35

Vla.

Vla.

Vla.

Vla.

This system contains measures 35 and 36 of a musical score for four violas. The key signature has two flats (B-flat and E-flat), and the time signature is 9/16. Measure 35 features a complex rhythmic pattern with eighth and sixteenth notes, including triplets. Measure 36 continues this pattern with some rests and a final half-note chord. The staves are labeled 'Vla.' on the left.

37

Vla.

Vla.

Vla.

Vla.

This system contains measures 37 and 38 of the musical score for four violas. The key signature remains two flats, and the time signature is 9/16. Measure 37 shows a more active melodic line in the top viola with eighth-note triplets, while the other parts have rests. Measure 38 continues the melodic development in the top viola, with the other parts providing harmonic support. The staves are labeled 'Vla.' on the left.

39

Vla.

Vla.

Vla.

Vla.

2

2

This musical system contains measures 39 and 40 for four violas. The key signature has two flats (B-flat and E-flat), and the time signature is 9/16. In measure 39, the first and second violas play a half note, while the third and fourth play quarter notes. In measure 40, the first and second violas play a half note with a '2' above it, indicating a second ending. The third and fourth violas play quarter notes. The notation includes various note values, rests, and a repeat sign at the end of measure 40.

41

Vla.

Vla.

Vla.

Vla.

This musical system contains measures 41 and 42 for four violas. The key signature changes to one flat (B-flat) in measure 42. In measure 41, all four violas play eighth notes. In measure 42, the first and second violas play a half note, while the third and fourth play quarter notes. The notation includes various note values, rests, and a repeat sign at the end of measure 42.

43

Four staves of music, each labeled "Vla." on the left. The music is written in 12/8 time, indicated by the 12 over 8 time signature. The first staff has a half note followed by a quarter note, then a half note, and a quarter note. The second staff has a half note followed by a quarter note, then a half note, and a quarter note. The third staff has a half note followed by a quarter note, then a half note, and a quarter note. The fourth staff has a half note followed by a quarter note, then a half note, and a quarter note. The music is written in a system with a brace on the left.

45

Four staves of music, each labeled "Vla." on the left. The music is written in 12/8 time, indicated by the 12 over 8 time signature. The first staff has a half note followed by a quarter note, then a half note, and a quarter note. The second staff has a half note followed by a quarter note, then a half note, and a quarter note. The third staff has a half note followed by a quarter note, then a half note, and a quarter note. The fourth staff has a half note followed by a quarter note, then a half note, and a quarter note. The music is written in a system with a brace on the left.



47

Vla.

Vla.

Vla.

Vla.

This musical system contains measures 47 and 48 for four violas. The key signature has two sharps (F# and C#), and the time signature is 9/8. In measure 47, the first three violas play eighth-note patterns, while the fourth plays a half note. In measure 48, the first three violas continue with eighth-note patterns, and the fourth plays a half note with a slur over it.

49

Vla.

Vla.

Vla.

Vla.

This musical system contains measures 49, 50, and 51 for four violas. The key signature has two sharps (F# and C#), and the time signature is 9/8. In measure 49, the first three violas play eighth-note patterns, and the fourth plays a half note. In measure 50, the first three violas play eighth-note patterns, and the fourth plays a half note. In measure 51, the first three violas play eighth-note patterns, and the fourth plays a half note.

52

Vla.

Vla.

Vla.

Vla.

This musical system contains measures 52 through 55 for four violas. The key signature has two sharps (F# and C#), and the time signature is 9/8. Measure 52 features a first staff with a melodic line of eighth notes and a second staff with a half note. Measures 53 and 54 continue the melodic development in the first staff, with the second staff providing harmonic support. Measure 55 concludes the system with a final melodic phrase in the first staff and a half note in the second staff. The third and fourth staves provide a steady accompaniment of half notes throughout the system.

56

Vla.

Vla.

Vla.

Vla.

This musical system contains measures 56 through 59 for four violas. The key signature has two sharps (F# and C#), and the time signature is 9/8. Measure 56 features a first staff with a melodic line of eighth notes and a second staff with a half note. Measures 57 and 58 continue the melodic development in the first staff, with the second staff providing harmonic support. Measure 59 concludes the system with a final melodic phrase in the first staff and a half note in the second staff. The third and fourth staves provide a steady accompaniment of half notes throughout the system.

60

Vla.

Vla.

Vla.

Vla.

This system contains measures 60 through 64 of a musical score for four violas. The music is written in 2/5 time with a key signature of two flats. Measure 60 features a melodic line in the top viola with eighth and quarter notes, while the other three violas provide harmonic support with various note values and rests. Measures 61-64 continue the melodic development in the top part, with the lower parts maintaining a steady accompaniment.

65

Vla.

Vla.

Vla.

Vla.

This system contains measures 65 through 69. Measure 65 begins with a long melodic phrase in the top viola, spanning across the first two measures of the system. The other violas play rhythmic patterns of eighth and quarter notes. Measures 66-69 show the continuation of these patterns, with the top viola part concluding with a half note in measure 69.

67

Vla.

Vla.

Vla.

Vla.

69

Vla.

Vla.

Vla.

Vla.

# Viola

♩ = 68

6

11

15 ♩ = 78

19

23 ♩ = 60

27 ♩ = 82

31

34

36

39

2

42

Musical notation for measure 42, featuring a treble clef, a key signature of one flat (B-flat), and a 6/8 time signature. The melody consists of eighth and quarter notes with various accidentals.

[illegible]

53

Example 53 is a single staff of music in 3/8 time. The melody begins with a quarter note, followed by an eighth note, a quarter note, and a half note. This is followed by a quarter note, an eighth note, a quarter note, and a half note. The melody continues with a quarter note, an eighth note, a quarter note, and a half note. The final measure contains a quarter note, an eighth note, and a quarter note.

57

57

62

62

67

Measure 67: The staff begins with a quarter rest. This is followed by a series of eighth notes: G4 (half note), A4 (half note), Bb4 (half note), B4 (half note), Ab4 (half note), Bb4 (half note), and B4 (half note). The measure concludes with a quarter note G4, which has a fermata above it.

# Viola

♩ = 68

7

13

♩ = 78

18

22

25 ♩ = 60 ♩ = 82

31

34

37

39

2

V.S.

42



48



51



56



62



66



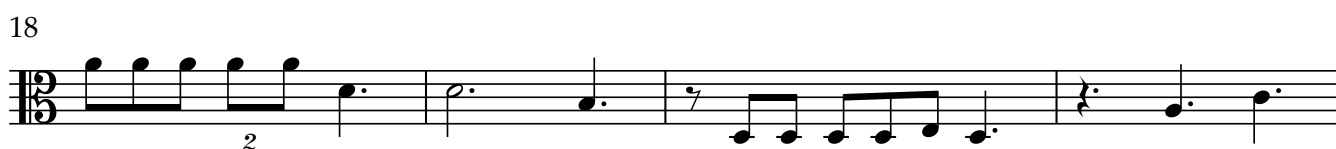
68





# Viola

♩ = 68



42



46



48



52



59



65



68



70



# Viola

♩ = 68



15 ♩ = 78



25 ♩ = 60

♩ = 82



45



49



54



58



65

